

ROLL & ESTATE

CLAIM RENTAL PROPERTY IN ANY ORDER
VALUES MUST INCREASE LEFT TO RIGHT

CLAIM BUSINESSES WHEN REQUIREMENTS
ARE MET (2 PLAYERS: USE "1ST TO" ONLY)



SUM OF
ONES ONLY



SUM OF
TWO'S ONLY



SUM OF
THREES ONLY



SUM OF
FOURS ONLY



SUM OF
FIVES ONLY



SUM OF
SIXES ONLY



SUM OF 3
MATCHED DICE



SUM OF 4
MATCHED DICE



\$10

SKID ROW

\$20

NICHOLSON DRIVE

\$20

HAMMOND ALLEY

\$25

PHILADELPHIA CIRCLE

\$30

BANCE PARK

\$35

HANSEN PLAZA

\$40

DIAMOND VALLEY

\$50

QUEEN CITY

\$60

1ST TO:

\$80

\$100

1ST TO:

\$65

1ST TO:

\$75

1ST TO:

\$90

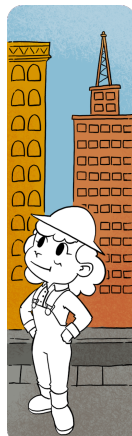
1ST TO:

\$100

1ST TO:

\$100

1ST TO:



MAX:
\$80

MAX:
\$120

MAX:
\$160

MAX:
\$140

MAX:
\$165

MAX:
\$195

MAX:
\$220

MAX:
\$250

GAME ENDS WHEN A PLAYER OPENS 3 BUSINESSES OR CANNOT CLAIM A RENTAL PROPERTY

TOTAL REAL ESTATE:



SEQUENCE
OF 4 DICE

ANY

1-4

2-5

3-6

RED LINE

BLUE LINE

YELLOW LINE

PURPLE LINE

MASS TRANSIT

CLAIM IN ANY ORDER: (ONLY ONE PLAYER MAY CLAIM EACH ROUTE)

1 ROUTE = \$50 2 ROUTES = \$100 3 ROUTES = \$175 4 ROUTES = \$250

MAX:
\$250

SUM OF ALL DICE:

LIQUID ASSETS

END OF GAME:

✉ = \$ X \$1

✉ = \$ X \$5

✉ = \$ X \$10

SEQUENCE OF FIVE

DARROW INDEX

SEQUENCE OF FIVE

MAGIE INDEX

MAX:
\$300

\$150

ALL 5 DICE MATCH

JACKPOT

MAX:
\$150



TOTAL REAL ESTATE:

TOTAL INVESTMENTS:

FINAL SCORE:

ROLL & ESTATE

CLAIM RENTAL PROPERTY IN ANY ORDER
VALUES MUST INCREASE LEFT TO RIGHT

CLAIM BUSINESSES WHEN REQUIREMENTS
ARE MET (2 PLAYERS: USE "1ST TO" ONLY)



SUM OF
ONES ONLY



SUM OF
TWO'S ONLY



SUM OF
THREES ONLY



SUM OF
FOURS ONLY



SUM OF
FIVES ONLY



SUM OF
SIXES ONLY



SUM OF 3
MATCHED DICE



SUM OF 4
MATCHED DICE



\$10

SKID ROW

\$20

NICHOLSON DRIVE

\$20

HAMMOND ALLEY

\$25

PHILADELPHIA CIRCLE

\$30

BANCE PARK

\$35

HANSEN PLAZA

\$40

DIAMOND VALLEY

\$50

QUEEN CITY

\$60

1ST TO:

\$80

\$100

1ST TO:

\$65

1ST TO:

\$75

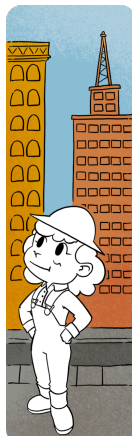
1ST TO:

\$90

1ST TO:

\$100

1ST TO:



MAX:
\$80

MAX:
\$120

MAX:
\$160

MAX:
\$140

MAX:
\$165

MAX:
\$195

MAX:
\$220

MAX:
\$250

GAME ENDS WHEN A PLAYER OPENS 3 BUSINESSES OR CANNOT CLAIM A RENTAL PROPERTY

TOTAL REAL ESTATE:



SEQUENCE
OF 4 DICE

ANY

1-4

2-5

3-6

RED LINE

BLUE LINE

YELLOW LINE

PURPLE LINE

MASS TRANSIT

CLAIM IN ANY ORDER: (ONLY ONE PLAYER MAY CLAIM EACH ROUTE)

1 ROUTE = \$50 2 ROUTES = \$100 3 ROUTES = \$175 4 ROUTES = \$250

MAX:
\$250

SUM OF ALL DICE:

LIQUID ASSETS

END OF GAME:

✉ = \$ X \$1

✉ = \$ X \$5

✉ = \$ X \$10

SEQUENCE OF FIVE

DARROW INDEX

SEQUENCE OF FIVE

MAGIE INDEX

MAX:
\$300

\$150

ALL 5 DICE MATCH

JACKPOT

MAX:
\$150



TOTAL REAL ESTATE:

TOTAL INVESTMENTS:

FINAL SCORE: