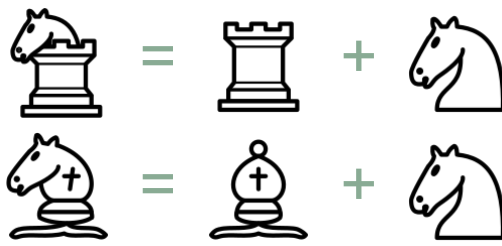
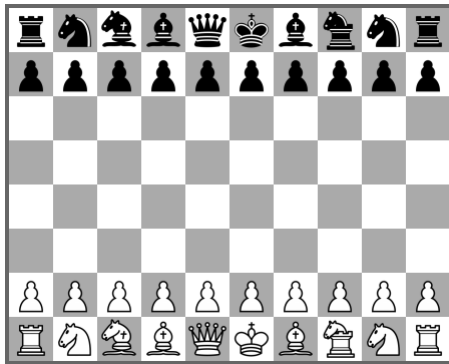


Chancellor and archbishop



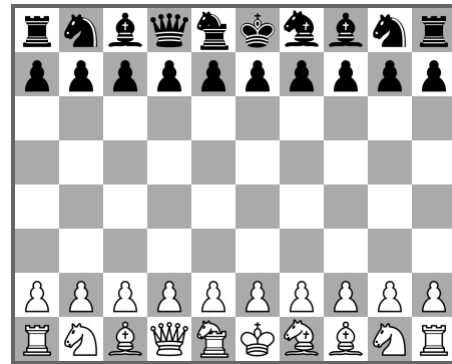
The **chancellor** combines the power of the rook and the knight.
The **archbishop** combines the power of the bishop and the knight.



Capablanca's Chess

10x8 board, with chancellor
and archbishop

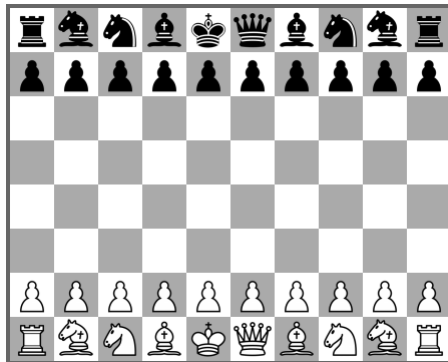
[Games](#) [Try the rules](#)



Gothic Chess

10x8 board, with chancellor
and archbishop

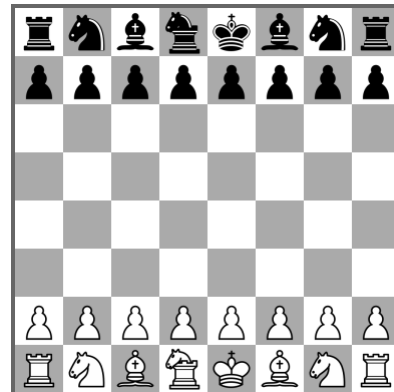
[Games](#) [Try the rules](#)



Janus Chess

10x8 board, with two
archbishops

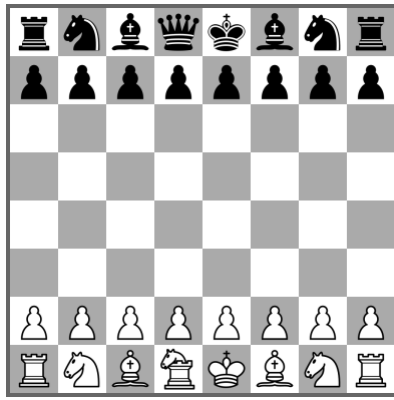
[Games](#) [Try the rules](#)



Almost Chess

Chancellor replaces the
queen

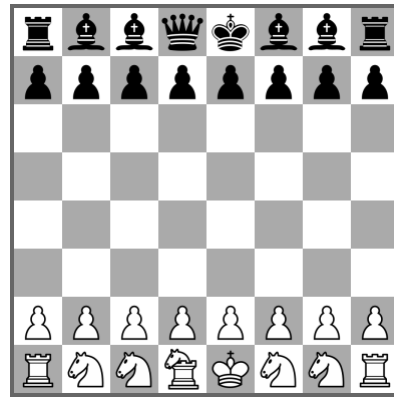
[Games](#) [Try the rules](#)



Sort of Almost Chess

White has chancellor instead of queen, while Black still has queen

[Games](#) [Try the rules](#)



Chigorin Chess

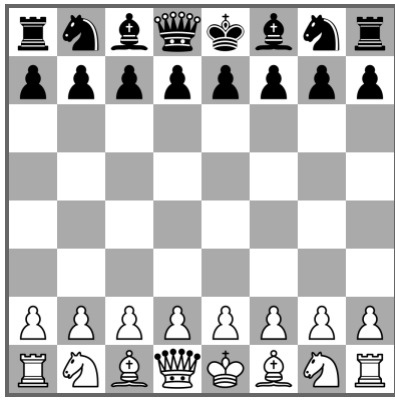
White has chancellor and knights, Black has queen and bishops

[Games](#) [Try the rules](#)

Superqueen



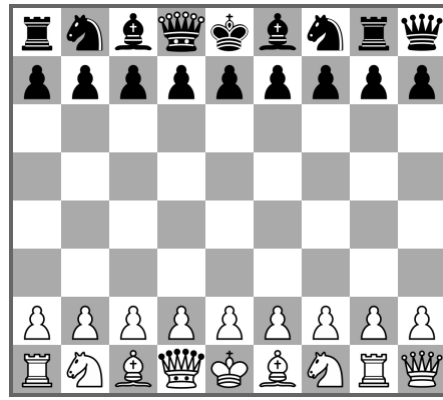
The **superqueen** combines the power of the queen and the knight.



Superqueen Chess

Superqueen instead of
queen

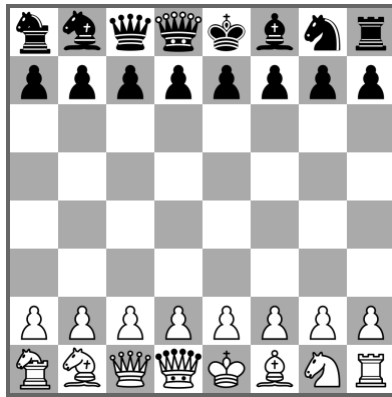
[Games](#) [Try the rules](#)



Superqueen Chess II.

Both queen and superqueen
on a larger board

[Games](#) [Try the rules](#)



Perfect Chess

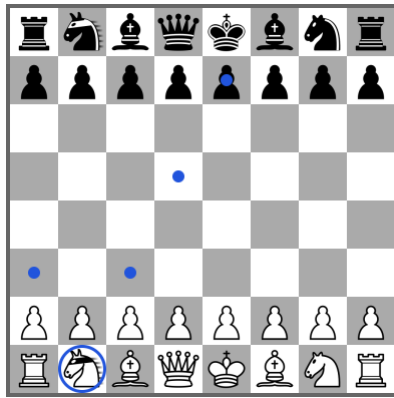
Each rook-bishop-knight
combination occurs
exactly once

[Games](#) [Try the rules](#)

Nightrider



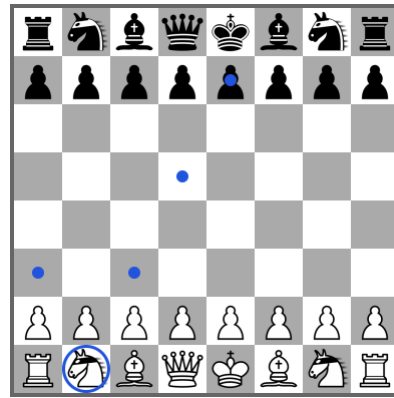
The **nightrider** is like the knight, but it can continue leaping in the same direction.



Nightrider Chess

One knight is a nightrider

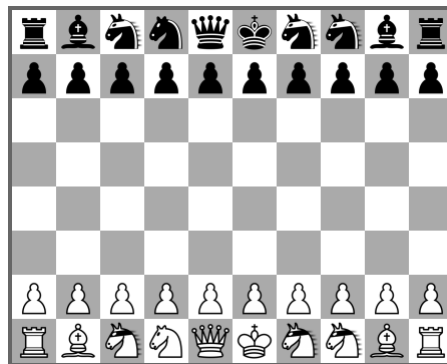
[Games](#) [Try the rules](#)



Nightrider Chess II.

Both knights are
nightriders

[Games](#) [Try the rules](#)



Nightrider Chess III.

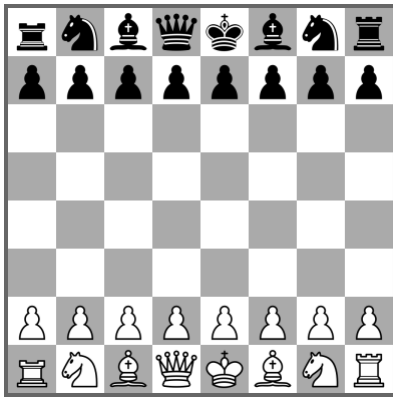
Wider board with many
nightriders

[Games](#) [Try the rules](#)

Short rook



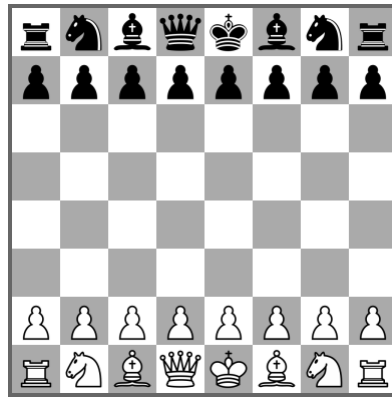
The **short rook** can move only four squares at once.



Short Rook Chess

One rook is a short rook

[Games](#) [Try the rules](#)

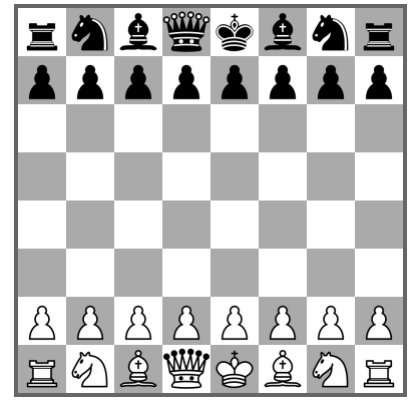


Short Rook Chess

II.

Both rooks are short rooks

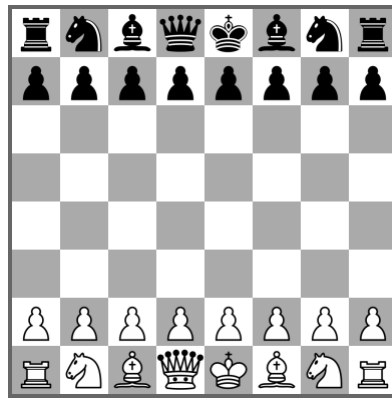
[Games](#) [Try the rules](#)



Top-heavy Chess

Queens are superqueens,
rooks are short rooks

[Games](#) [Try the rules](#)

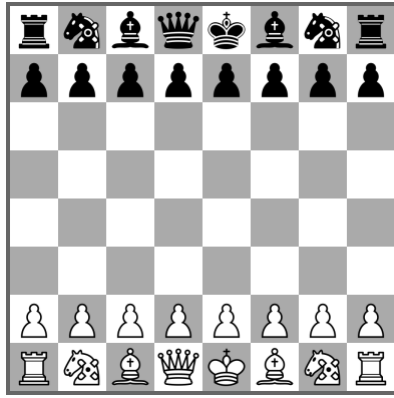


Half Top-heavy Chess

White has superqueen
and short rooks against
Black's usual set

[Games](#) [Try the rules](#)

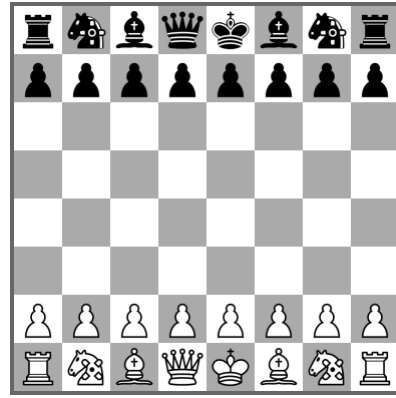
Other



Augmented Knight

The knights are extended with a new power

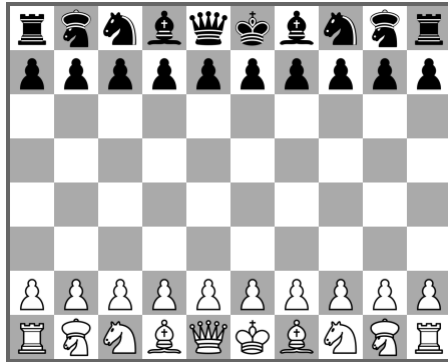
[Games](#) [Try the rules](#)



Asymmetric Augmented Knight

The knights are extended with a new power, but different for the two players

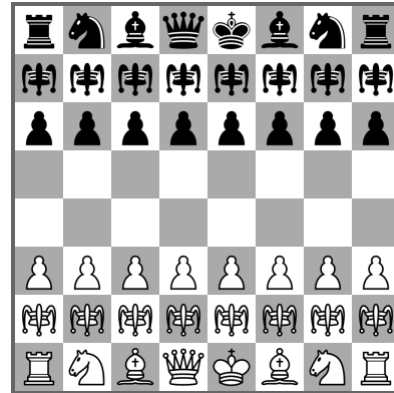
[Games](#) [Try the rules](#)



Centaur Chess

The centaur moves like the knight or the king

[Games](#) [Try the rules](#)



Grasshopper Chess

The grasshopper moves by jumping over an other piece

[Games](#) [Try the rules](#)